

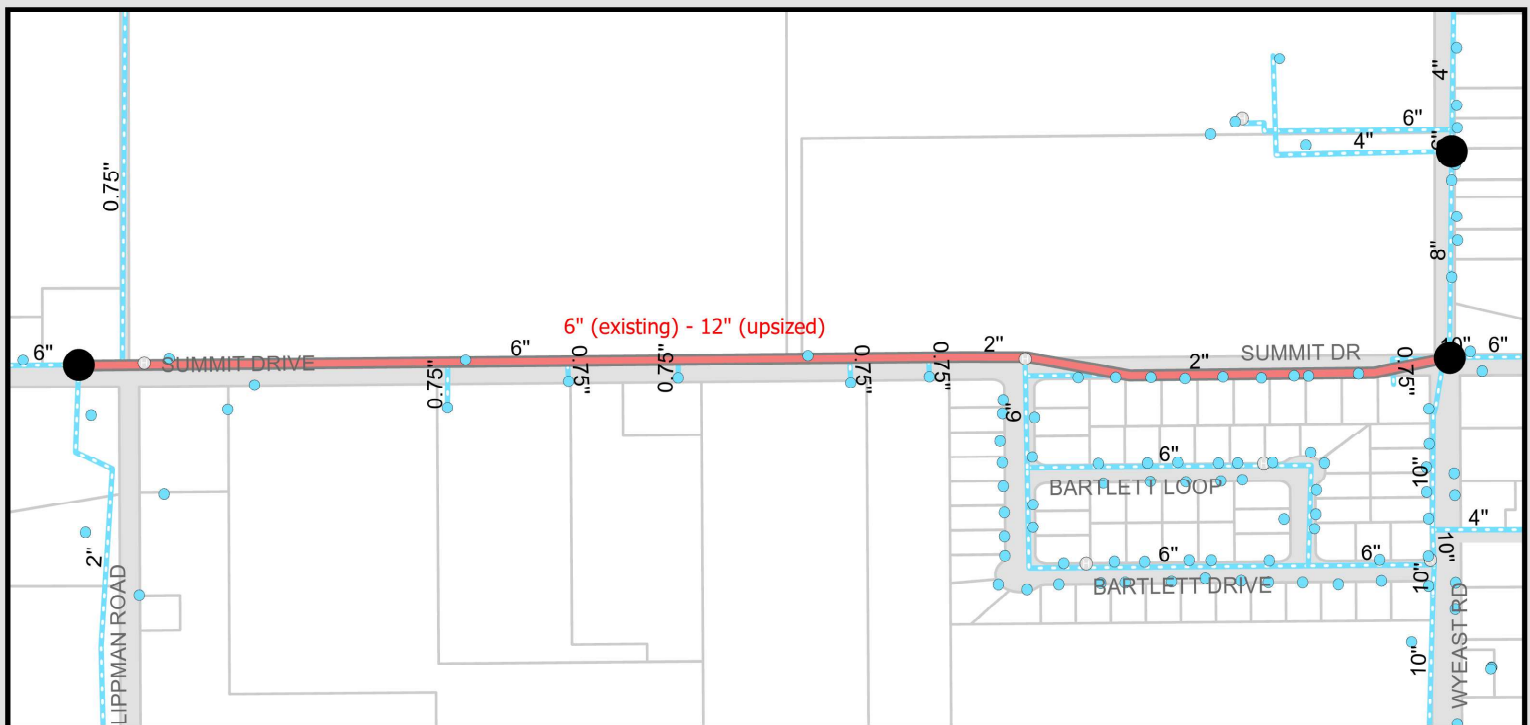
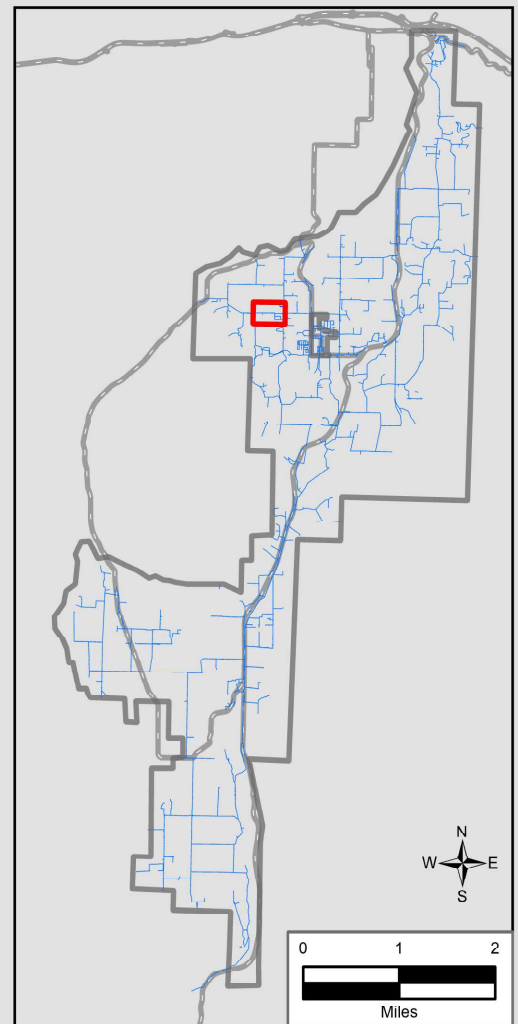
CIP 17: Summit Drive - Wyeast Road to Lippman Road

Project Cost: \$1,555,125

Project Priority: Low

Project Description

Approximately 3,300 ft of 12-in water line will be installed on Summit Drive between Wyeast Road and Lippman Road to replace the existing 6-in water line. The upsized water line will increase distribution capacity and maintain higher pressure in the west quadrant of the Odell Pressure Zone, particularly during a fire.



Upsized Waterline	Relief Valve	Crystal Spring	Highway/Road
New Waterline	Hydrants	Existing Waterline	Property line
New PRV	Existing Reservoir	District Boundary	Water
New Reservoir			
PRV Existing			

0 250 500 1,000 Feet

Date: 8/27/2025