

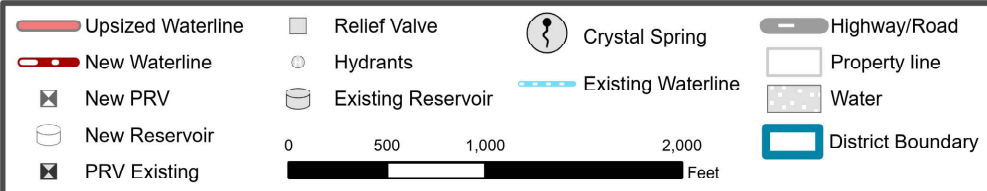
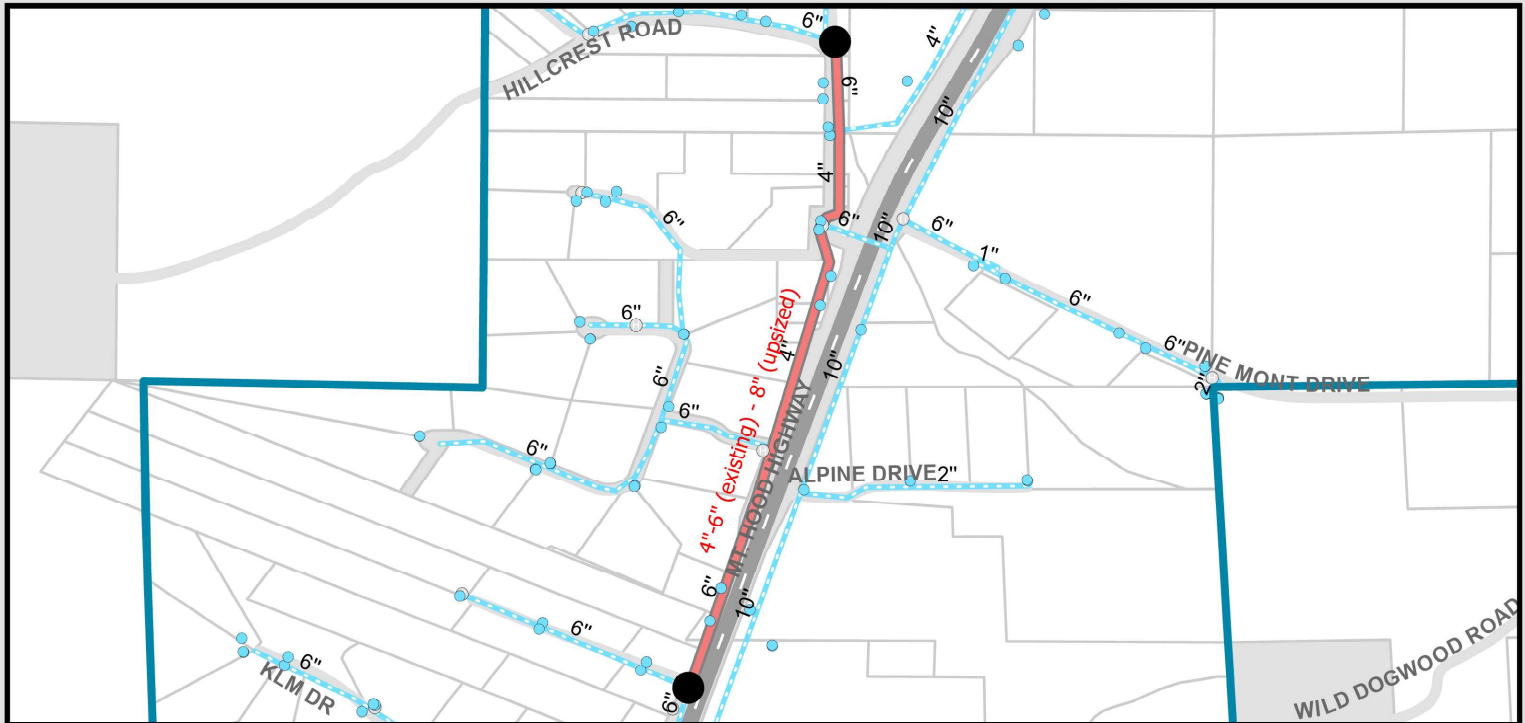
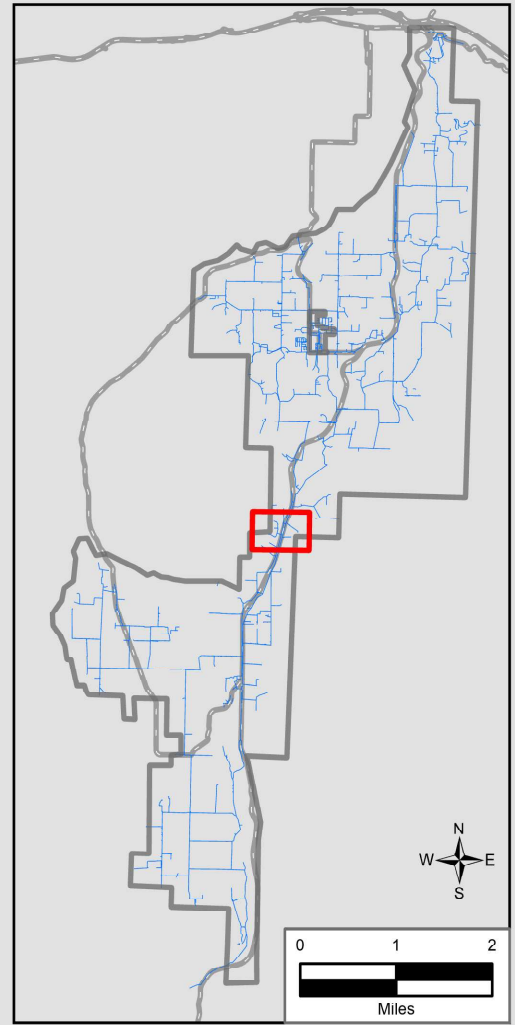
CIP 11: Highway 35 - Hillcrest Road to Nastasi Drive

Project Cost: \$1,522,500

Project Priority: Medium

Project Description

Approximately 3,500 ft of 8-in water line will be installed along the west side of Highway 35 between Nastasi Drive and Hill Crest Road to replace the existing 4-in water line. The upsized water line will improve fire flows, redundancy, and distribution capacity in the central part of the District, south of Booth Hill.



Date: 8/28/2025



Default Folder: P:\K0\23\23817_CSWD_VMP\GIS\3_Carographic\CIP Out Sheets\2025\Crystal Springs\2025 CIP Map Figures